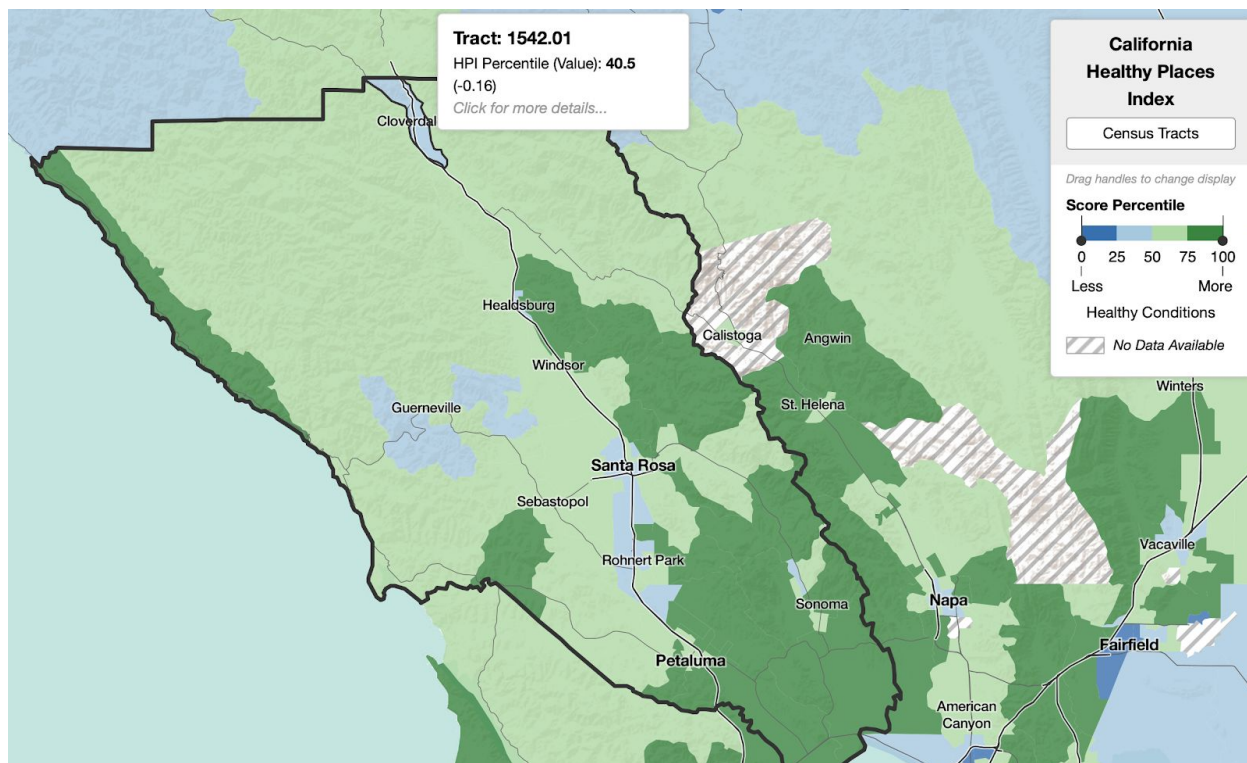


Health equity series to inform strategic planning

3 of 5 | October 7, 2020



1. California's ["Blueprint for a Safer Economy"](#)

- a. California has a new blueprint for reducing COVID-19 in the state with revised criteria for loosening and tightening restrictions on activities. Every county in California is assigned to a tier based on its test positivity and adjusted case rate for tier assignment including metrics from the last three weeks. **Additionally, a new health equity metric will take effect on October 6, 2020.** In order to advance to the next less restrictive tier, each county will need to meet an equity metric or demonstrate targeted investments to eliminate disparities in levels of COVID-19 transmission, depending on its size. **The California Health Equity Metric is designed to help guide counties in their continuing efforts to reduce COVID-19 cases in all communities and requires more intensive efforts to prevent and mitigate the spread of COVID-19 among Californians who have been disproportionately impacted by this pandemic.** [The CA Healthy Places Index](#) (map above) is a component of the Equity Metric.
- b. [COVID-19 case and death data](#), by race/ethnicity, as of 10/5/20
- c. More on the [Equity Metric](#)

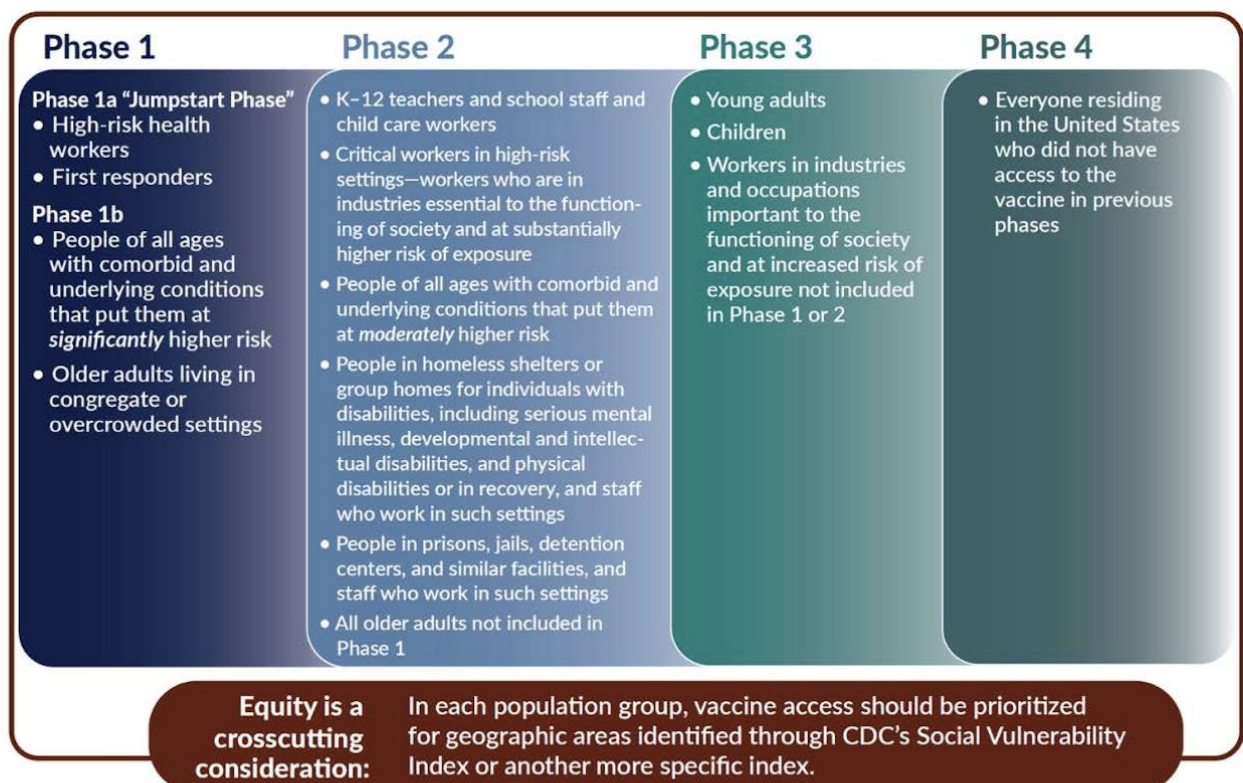
Health equity series to inform strategic planning

3 of 5 | October 7, 2020

2. [George Floyd’s Death Is Killing Me](#) by California Surgeon General Dr. Nadine Burke Harris (June 2020) (3 min)

- a. “...As a doctor and a policymaker, I often hear the question “what is it about black and brown people” that makes us more vulnerable to the virus? **That question infuriates me. The science makes clear how powerfully our experiences and environments shape our biology. It has been clear for decades. Our daily experiences activate cascades of biological pathways.** When those experiences are nurturing and enriching, they put us on a trajectory of wellness and resilience. **But when those experiences are threatening and adverse, they accelerate us down the path of early disease and death.** Racist oppression ensures that black and brown children bear a disproportionate burden of dehumanizing and traumatic experiences. Science shows it is sickening them and killing them.”

3. [Framework for the Equitable Allocation of COVID-19 Vaccine](#) webinar slides from October 2nd public release



Health equity series to inform strategic planning

3 of 5 | October 7, 2020

4. [**The Interwoven Threads of Inequality and Health**](#) (Q&A with Dr. Nancy Krieger, *The New Yorker*, April 2020) (10 min)
 - a. Nancy Krieger is a professor of social epidemiology at the Harvard T. H. Chan School of Public Health. Her work focuses on health disparities between demographic groups and the social structures that help determine those disparities. We recently spoke by phone about how American health inequities are playing out during the pandemic. During our conversation, which has been edited for length and clarity, we discussed **why the field of social epidemiology is crucial to understanding inequality, the causes of racial disparity in health outcomes, and what can be done to ameliorate the suffering of the most vulnerable Americans** during this crisis.

5. American Medical Association (AMA)

- a. [**How to tackle health inequities with science, data during pandemic**](#) (5 min)
- b. [**COVID-19 health equity initiatives across the US**](#) (5-15 minutes)
 - i. See how health care, governmental and community organizations across the country are working to provide resources to minoritized and marginalized populations, dismantling racist systems and improving patient trust in the health care system.
- c. [**Prioritizing Equity YouTube Series**](#) (13-72 minute conversations)
 - i. A recurring series hosted and moderated by AMA Chief Health Equity Officer Aletha Maybank, MD, MPH, airing every Thursday. The Prioritizing Equity series illuminates how COVID-19 and other determinants of health uniquely impact marginalized communities, public health and health equity, with an eye on both short-term and long-term implications.
 1. [**COVID-19 & Latinx Voices in the Field**](#) (May 2020) (60-min conversation)